



# Brooks Brothers® Mid-Layer Stretch 1/2-Button BB18202

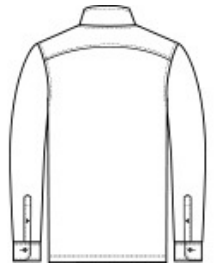
Structured double-knit style with a luxuriously soft hand, this pullover skips the traditional zipper in favor of a relaxed, elevated look.

- 8-ounce, 76/22/2 polyester/rayon/spandex double-knit
- Cadet collar
- Faux horn buttons with Brooks Brothers logo
- Rounded buttoned cuffs

\*\*



front



back

## HOW TO MEASURE



### CHEST WIDTH

Measure under the arm and around the fullest part of the chest with arms down, keeping tape horizontal.

## SIZE CHART

	XS	S	M	L	XL	2XL	3XL	4XL
Chest	32-34	35-37	38-40	41-43	44-47	48-51	52-56	57-61

## COLOR INFORMATION



Aegean Blue Heather  
PMS 2139C



Black Heather  
PMS 426C



Navy Blazer Heather  
PMS 533C



Pine Heather  
PMS 446C



Windsor Grey Heather  
PMS 426C