



Ultra-soft meets cozy warmth in these layerable sherpa fleece pullovers. Ideal for cooler days, they are comfortable, versatile and designed to fend off the chill in style.

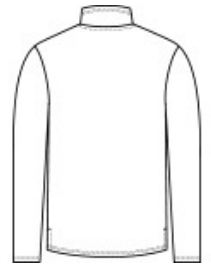
- 6.8-ounce, 100% polyester sherpa fleece
- Reverse coil zipper
- Dyed-to-match neck tape, zipper and zipper pull
- Open cuffs and hem

CARE INSTRUCTIONS

Machine wash cold separately. Do not bleach. Tumble dry low. Remove promptly. Cool iron if necessary. Or dry clean.



front



back

HOW TO MEASURE



CHEST WIDTH
Measure under the arm and around the fullest part of the chest with arms down, keeping tape horizontal.

SIZE CHART

	XS	S	M	L	XL	2XL	3XL	4XL
Chest	32-34	35-37	38-40	41-43	44-46	47-49	50-53	54-57

COLOR INFORMATION



Black
PMS NTR BLACK
C

Charcoal

Grey Heather

Oatmeal
Heather